

2020



# COMMUNITY

# REPORT CARD

★  
★  
Lenawee ★  
Cradle to Career ★  
Pathways to Success! ★





## Dear Community Members:

Thank you to all of our community partners in the Lenawee Cradle to Career effort. Since 2013, the Lenawee C2C Partnership has been focused on moving our community forward in the area of five adopted outcome measures. This annual report card contains the most recent data on these outcomes and some examples of the good work going on in each of the focus areas.

This has been a challenging year for all due to the ongoing COVID-19 pandemic, particularly in education. As a result, much of the data we usually measure was either unavailable or incomplete and may not be an accurate reflection of our county. Please keep this in mind as you review the report.

We are continually looking for committed individuals who would like to be involved with this collaborative effort. If you are interested in getting involved, please reach out to us. Together we can build from the incredible resources in our community to positively impact every individual.

Sincerely,

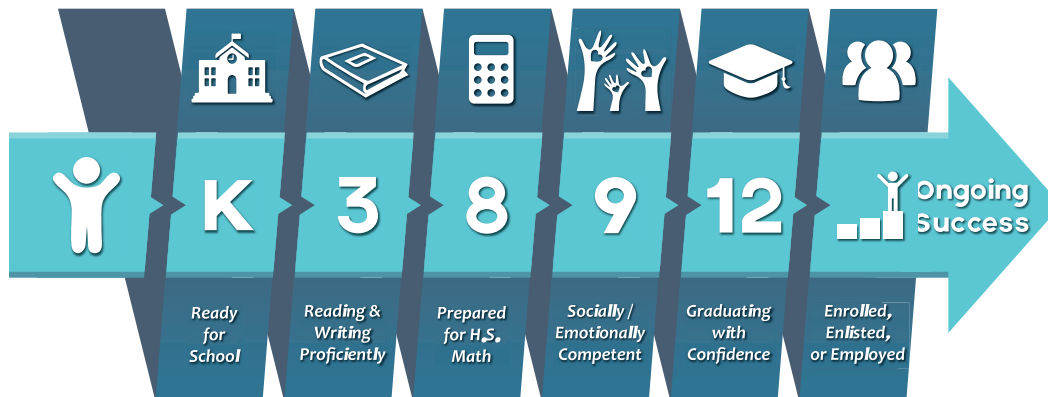
### MARK HAAG

Superintendent, Lenawee Intermediate School District (LISD)

### SHANNON ELLIOTT

Deputy Director, Lenawee County Probate Juvenile Court

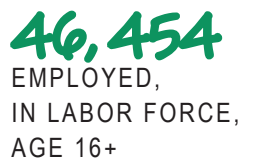
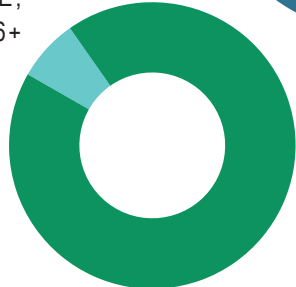
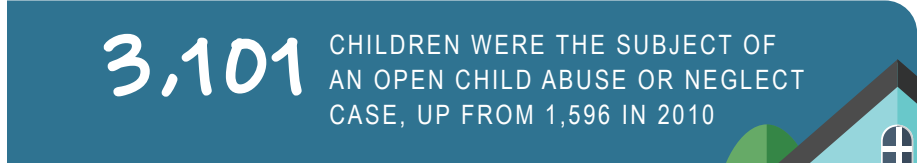
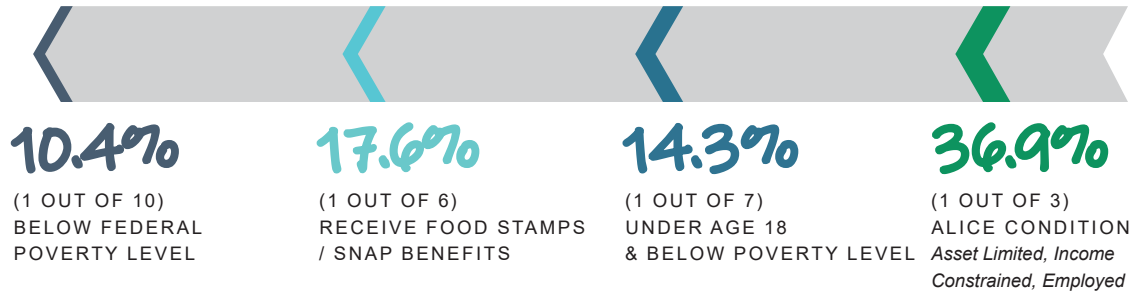
*Co-Chairs of the Lenawee Cradle to Career Executive Leadership Team*



## Contents

What is C2C	4
Outcomes Dashboard	5
School Readiness	6
Reading & Writing	7
High School Graduation	8
Enrolled, Enlisted, or Employed	9
A Look to the Future	10
Partners	11

# A Snapshot of Lenawee



MICHIGAN ASSOCIATION OF UNITED WAYS  
[www.uwmich.org/alice](http://www.uwmich.org/alice)

ANNIE E. CASEY FOUNDATION  
[www.datacenter.kidscount.org](http://www.datacenter.kidscount.org)

US BUREAU OF LABOR STATISTICS  
[www.bls.gov/lau](http://www.bls.gov/lau)

# What is Cradle to Career?

Lenawee Cradle to Career (C2C) is a community-comprised partnership working to ensure pathways of success for every child, every step of the way, cradle to career. We are a member of StriveTogether ([strivetogther.org](http://strivetogther.org)), a national network of like partnerships.

C2C began in 2013 when Lenawee County superintendents agreed to move educational impact from individual action toward collective work. Along the way, representatives from faith-based organizations, local agencies, and the business community have rounded out the cross-sector partnership.



## Vision

Every child, every step of the way, cradle to career

## Mission

To ensure that everyone has pathways to reach their potential, cradle to career

**AS A COUNTY, WE'RE WORKING TO MOVE FROM INDIVIDUAL ACTION TO COLLECTIVE IMPACT.**

### COLLECTIVE IMPACT

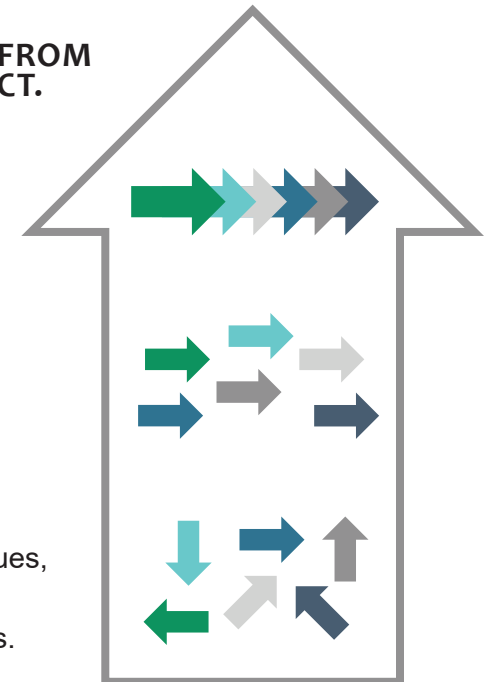
- › A group working towards the same outcome,
- › Looking at student level data,
- › To continuously improve practices over time.

### COORDINATED IMPACT

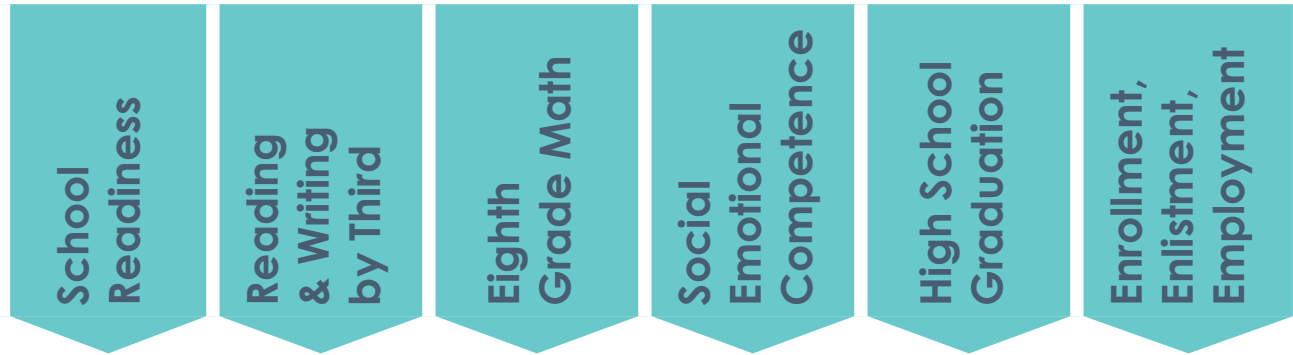
- › A group working on the same issue,
- › Sharing program level data,
- › To identify best practices and align efforts.

### INDIVIDUAL IMPACT

- › Individual practitioners working on specific issues,
- › Collecting qualitative and quantitative data,
- › To demonstrate impact with individual students.



# 2020 Community Outcomes Dashboard for Lenawee County, Michigan



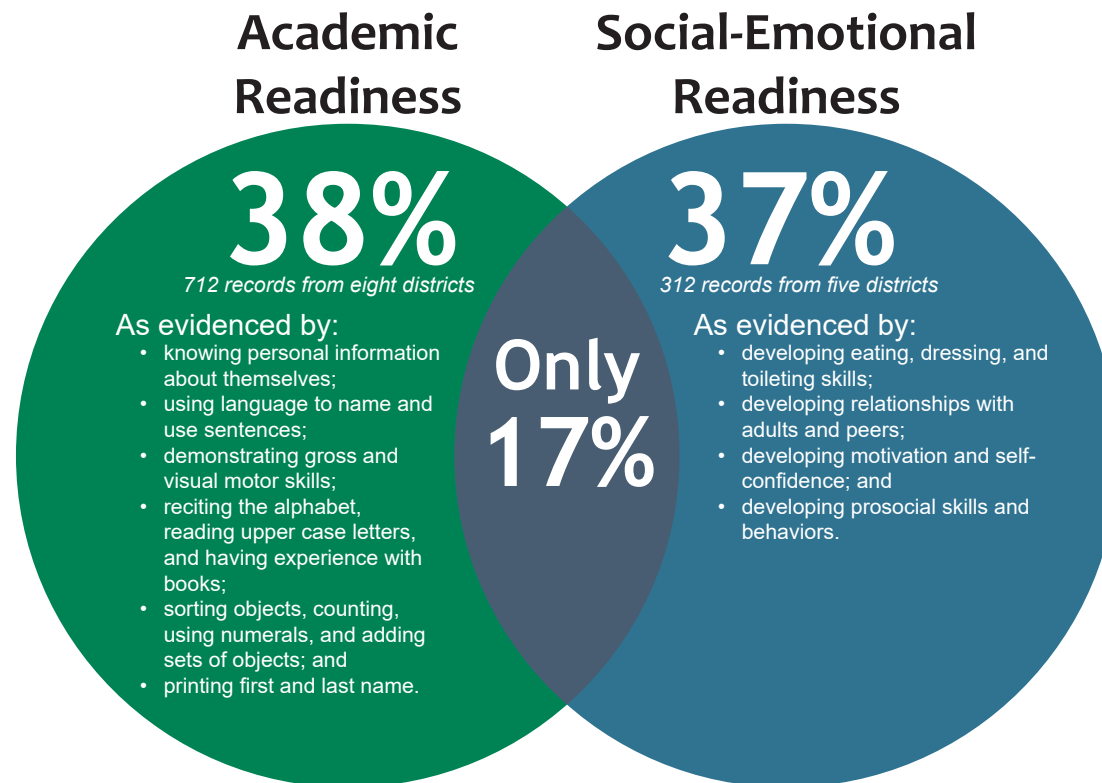
Description	School Readiness	Reading & Writing by Third	Eighth Grade Math	Social Emotional Competence	High School Graduation	Enrollment, Enlistment, Employment
Recent Data	38% Fall 2020	47% Spring 2019	36% Spring 2019	4 Districts Participated	88% 2019 Cohort	55% Class of 2019
% Change Since Data Collected	13% ↓	1% ↓	6% ↑	N/A	1% ↓	11% ↓
African American	N/A	29%	35%	N/A	69%	42%
Hispanic	N/A	35%	31%	N/A	86%	54%
Economically Disadvantaged	N/A	36%	24%	N/A	80%	44%
Students with Disabilities	N/A	12%	0%	N/A	73%	27%

# School Readiness

**38% of kindergarteners were academically ready for school in Fall 2020**

*The 2016 strategic plan session established the following desired outcome: The percentage of students scoring an academic benchmark for kindergarten readiness will increase from 50% to 85% by 2022, as measured by the BRIGANCE Assessment, administered by local districts in the spring before students enter kindergarten.*

In addition to the BRIGANCE core academic indicators assessment, local districts have begun administering a unified social emotional assessment. Here's what was learned in 2020:





# Reading & Writing

47% of third graders were proficient in Spring 2019

*The 2016 strategic plan session established the following desired outcome: The percentage of students proficient in reading by the end of grade 3 will increase from 48.8% to 55% as measured by the M-STEP 3rd grade assessment in Spring 2020.*

The Lenawee C2C Literacy Network has focused work on reducing summer literacy slide by hosting Summer Lit Lab Pop-Up events throughout the county. Numerous studies show that students who don't read during summer vacation actually slip in reading ability by fall. Opportunities for children to engage in learning activities during the summer months are difficult to find in a normal year, let alone during a global pandemic.

This year, local literacy leaders collaborated to provide virtual Summer Lit Lab Pop-Ups. Bags with books, writing materials, and STEM activities were distributed to participating students throughout Lenawee County. Students were then able to join weekly read-alouds and learning sessions via video conference.

## Virtual Lit Lab Data

**586** students registered

**3,472** books distributed to students for the summer

**1,897** books returned and added to classroom libraries

**85.2%** of families saw an increase in time their child spent reading



# High School Graduation

88% of the Class of 2019 graduated high school within five years

*The 2016 strategic plan session established the following desired outcome: The percentage of students graduating from high school earning a certificate of completion will increase from 86% to 100% by August 2023, as measured by the five-year cohort of the Class of 2023, as reported by the Michigan Department of Education.*

One of the biggest obstacles to graduating on time is a sustained number of school absences. Fortunately, chronic absenteeism in Lenawee County has been trending downward with 14.8% of local students chronically absent in 2020 (20.4% statewide). Part of Lenawee's success in this area can be attributed to the local truancy prevention system developed in 2018. In this system, the school districts work with the court system and county agencies to provide intervention and support services earlier and before a child is in front of the court.





# Enrolled, Enlisted, or Employed

55% of the Class of 2019 enrolled in post-secondary institutions

*The 2016 strategic plan session established the following desired outcome: The percentage of Lenawee County high school graduates enrolling in their post-secondary choices within the first year after high school graduation will increase from 66% to 73% by the end of 2019, using data from the National Student Clearinghouse and workforce databases.*

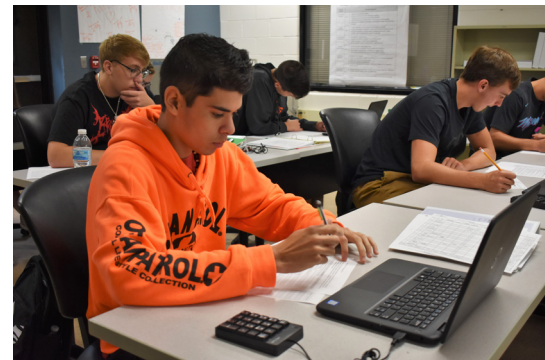
## College Application Month

Every public school in Lenawee County devotes the month of October to the post-secondary plans of their students. One of the main activities includes FAFSA (Free Application for Federal Student Aid) informational and completion nights. **58% of Lenawee high school seniors completed a FAFSA by Spring 2020.**

## Post-Secondary Credentials

A four-year college is not the only post-secondary choice for Lenawee students. Many pursue a valuable credential. While this is difficult to track, it's not too difficult to define.

A credential consists of an industry-recognized certification, a certificate of completion of an apprenticeship, a state license, or a degree from a higher education institution.



# A Look to the Future

On January 1, 2021, the Lenawee Cradle to Career Partnership began the process of integrating the Whole School, Whole Community, Whole Child (WSCC) model into the partnership's work.

The WSCC model is the framework utilized by both the Centers for Disease Control and Prevention (CDC) and the Association for Supervision and Curriculum Development (ASCD). The focus of the WSCC model is directed at the whole school, with the school in turn drawing its resources and influences from the whole community and serving to address the needs of the whole child. This collaborative approach is used to improve students' learning and health.

Including the WSCC model does not mean the C2C mission, vision, goals, or partnerships will disappear. In fact, by incorporating the WSCC model into C2C, we will expand the scope of our work by focusing holistically on 10 components of the school, community, and family that impacts a child's development, setting them up for long-term success.

To learn more about the WSCC model, visit [www.ascd.org/whole-child.aspx](http://www.ascd.org/whole-child.aspx).

**WHOLE SCHOOL, WHOLE COMMUNITY, WHOLE CHILD**  
*A collaborative approach to learning and health*



## Executive Team

Shannon Elliott

*Co-Chair*

Mark Haag

*Co-Chair*

Patricia Gray

John Haught

Michael Masters

Christine MacNaughton

## Data Team

Stan Masters

*Chair*

Jackie Bradley

Mallory Frailing

Liz Fuss

Chris Howard

Christine MacNaughton

Amanda Morris

Jim Southard

Eleanor Wollet

## Community Leadership Team

Vanessa Armstrong

*Lenawee Great Start*

De'Angelo Boone

*Habitat for Humanity*

Jackie Bradley

*Lenawee Co. Mental Health Authority*

Christie Cadmus

*Lenawee Great Start*

Marsha Davis

*Onsted Community Schools*

Madeline DeMarco

*Lenawee Co. Mental Health Authority*

Lisa Eack

*Lenawee Great Start*

Shannon Elliott

*Lenawee County Court*

Michael Fox, Jr.

*Lenawee Now*

Deb Followell

*Tecumseh Public Schools*

Liz Fuss

*Child Care Network*

Patricia Gray

*Siena Heights University*

Eric Gillespie

*Boys & Girls Club of Lenawee*

Mark Haag

*LISD Superintendent*

John Haught

*Goodwill Industries of SE Michigan*

Jenny Heath

*LISD TECH Center*

Kellie Henning

*Dept. of Health & Human Services*

Chris Howard

*LISD*

Christine MacNaughton

*Building Safe & Healthy Communities*

Michael Masters

*Jackson College*

Stan Masters

*LISD*

Heather Perez

*Community Learning Connections*

Cari Rebottaro

*Lenawee Department on Aging*

Matt Swartzlander

*Adrian Chamber of Commerce*

Kathleen Shepherd

*Monroe Community College*

Michael Smith

*United Way of Monroe & Lenawee*

Annette Sobocinski

*Child Care Network*

Jim Southard

*Lenawee Community Foundation*

Janelle Stewart

*Michigan State University Extension*

John Wanke

*Lenawee Co. Education Foundation*

Libby Watson

*Adrian Symphony Orchestra*

Randy Yagiela

*Lenawee Now*



# Community Partners

C2C's network is made up of partners across various sectors in the community who contribute in countless ways, including:

- Providing access to data, meeting space, or other essential information;
- Engaging in the work around one or more of C2C's desired outcomes;
- Sustaining C2C through in-kind personnel and/or funding; and/or
- Actively promoting, disseminating, and endorsing the work of C2C.

## Get Involved!

*If you or your organization is interested in knowing more about being a Lenawee Cradle to Career Partner, please contact:*

Tim Kelly, Director of  
Lenawee Cradle to Career

[tim.kelly@lisd.us](mailto:tim.kelly@lisd.us)

517-265-1636

## LENAWEE ISD

The backbone organization providing personnel for the daily operation of the partnership.

## EDUCATION

Addison Community Schools  
Adrian College  
Adrian Public Schools  
Blissfield Community Schools  
Britton Deerfield Schools  
Clinton Community Schools  
Hudson Area Schools  
Jackson College @ LISD TECH  
Lenawee Christian School  
LifeTech Academy  
Madison School District  
Montessori Children's House of Lenawee  
Morenci Area Schools  
Onsted Community Schools  
Sand Creek Community Schools  
Siena Heights University  
Tecumseh Public Schools

## BUSINESS & INDUSTRY

Athletico  
Clift Buick GMC  
First Federal Bank  
Glycon Corporation  
Image Center  
Lenawee's Heart and Soul  
Living in Lenawee Realty  
ProMedica Bixby & Herrick Hospitals

## PUBLIC & GOVERNMENT

Adrian Area Chamber of Commerce  
City of Adrian  
City of Morenci  
City of Tecumseh  
Lenawee Community Mental Health Authority  
Lenawee County Administrator's Office  
Lenawee County Juvenile Court  
Lenawee Department on Aging  
Lenawee Department of Health & Human Services

## SOCIAL SECTOR

Adrian Breakfast Lions Club  
Adrian District Library  
Adrian Morning Rotary  
Adrian Noon Rotary  
Adrian Rea Literacy Center  
Adrian Symphony Orchestra  
Blissfield Area Lions Club  
Blissfield Rotary Club  
Boys & Girls Club of Lenawee  
Catholic Charities of Jackson, Lenawee, and Hillsdale Co.  
Child Care Network  
Community Action Agency  
Community Learning Connections  
Family Counseling & Children's Services  
Gateway Community Church  
Goodwill Industries of Southeastern MI  
Habitat for Humanity of Lenawee County  
I92 Ministries  
Kiwanis Club of Adrian  
Lenawee College Access Network  
Lenawee Community Foundation  
Lenawee County Education Foundation  
Lenawee District Library  
Lenawee Great Start Collaborative  
Lenawee NAACP  
Lenawee Now  
Lenawee Substance Abuse Prevention Coalition  
Michigan State University Extension  
Michigan State University - Hidden Lake Gardens  
Michigan Works! Southeast  
Omega Youth Empowerment  
One Lenawee  
United Way of Monroe/Lenawee Counties  
YMCA of Lenawee County